

Taste & Flair

ISSUE 162 DISTRIBUTED WITH THE MALTA INDEPENDENT ON SUNDAY

MARCH 2024



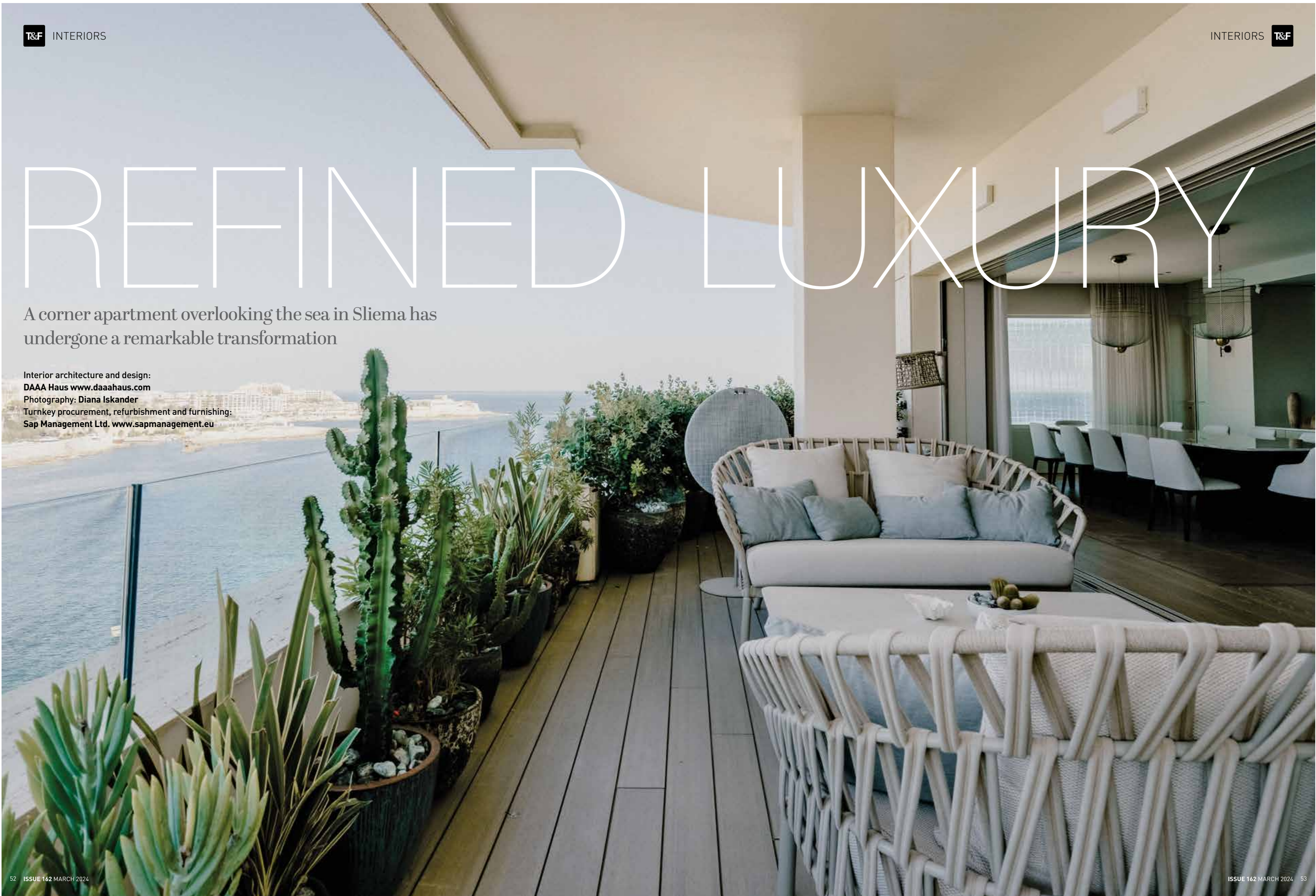
Feed your imagination

MALTESE CUISINE • WINE • SEASONAL FOOD • INTERIOR DESIGN

REFINED LUXURY

A corner apartment overlooking the sea in Sliema has undergone a remarkable transformation

Interior architecture and design:
DAAA Haus www.daaahaus.com
Photography: Diana Iskander
Turnkey procurement, refurbishment and furnishing:
Sap Management Ltd. www.sapmanagement.eu





A stroll along the Sliema promenade can be an unsettling experience. While the aura of exclusivity persists, the instinctive search for a visual anchor is frustrated by the absence of architectural rhythm and harmony. So it is with some relief that one turns inward to rediscover the quiet elegance that once defined the character of the area fondly known as “the Sliema front”.

Across from the road from the historic stone tower that gave the street its name, a slice of the corner Seacliff development has recaptured that sense of discreet style. The well-appointed interior of the 4-bedroom corner seafront apartment in a design by DAAA Haus, seamlessly marries opulence with contemporary functionality, exuding an air of refined elegance.



The internal layout was altered and now includes a private lift lobby entrance, which sets a tone of exclusivity. Upon entry, a large hall with a picture panoramic window frames the view of the Dragonara peninsula, inviting the beauty of the outdoors inside. The open space TV/living and dining area seamlessly transitions into a reading lounge and a separate bar and entertainment wine lounge, creating a harmonious flow, and opens out onto a large terrace where the sea breeze and views can be enjoyed in complete privacy.

The design throughout is a testament to the quality of skilled craftsmanship and attention to detail. Bespoke boiserie in a subtle and sophisticated matt limed finish adorns the walls, creating an atmosphere of warmth and sophistication. Throughout the space bespoke marble works elevate the aesthetic, complemented by the warmth of real wood flooring that lends a sense of natural beauty to the living spaces.



The well-appointed interior seamlessly marries opulence with contemporary functionality, a testament to the quality of skilled craftsmanship and attention to detail.



“In the living area, the colour palette is soft and neutral. Light caramel and white with shades of blue, inspired by the views of the limestone beach, the sea and sky, create a light and airy atmosphere,” says Keith Pillow, creative director of DAAA Haus. In one of the bathrooms, soothing earthy tones – the ribbed wooden vanity unit, smooth wood door and blinds, dark veined marble floor and wall cladding – evoke a sense of calm. Further inside, the deep blue of the walls, cantilevered cabinets and seating have a cocooning effect. Throughout the interior, natural materials – warm wood, smooth marble, metal, leather and suede – provide tactile and visual texture.

The furniture, fixtures, and equipment were meticulously chosen with Sap Management Ltd, who specialise in high-end property refurbishment and furnishings. From the elegant seating to bespoke light fixtures, each piece was handpicked to enhance the apartment’s aesthetic.

The detailing is meticulous: bespoke cabinetry with inset lighting, leather covered cabinet doors with visible stitching, a wood panelled “waffle” ceiling in the living area, inset rope lighting in the corridor ceiling, curtain rails along the seafront windows that are set into the ceiling and hidden from view.



Meticulous detailing and hand-picked pieces enhance the elegant aesthetic throughout the apartment.



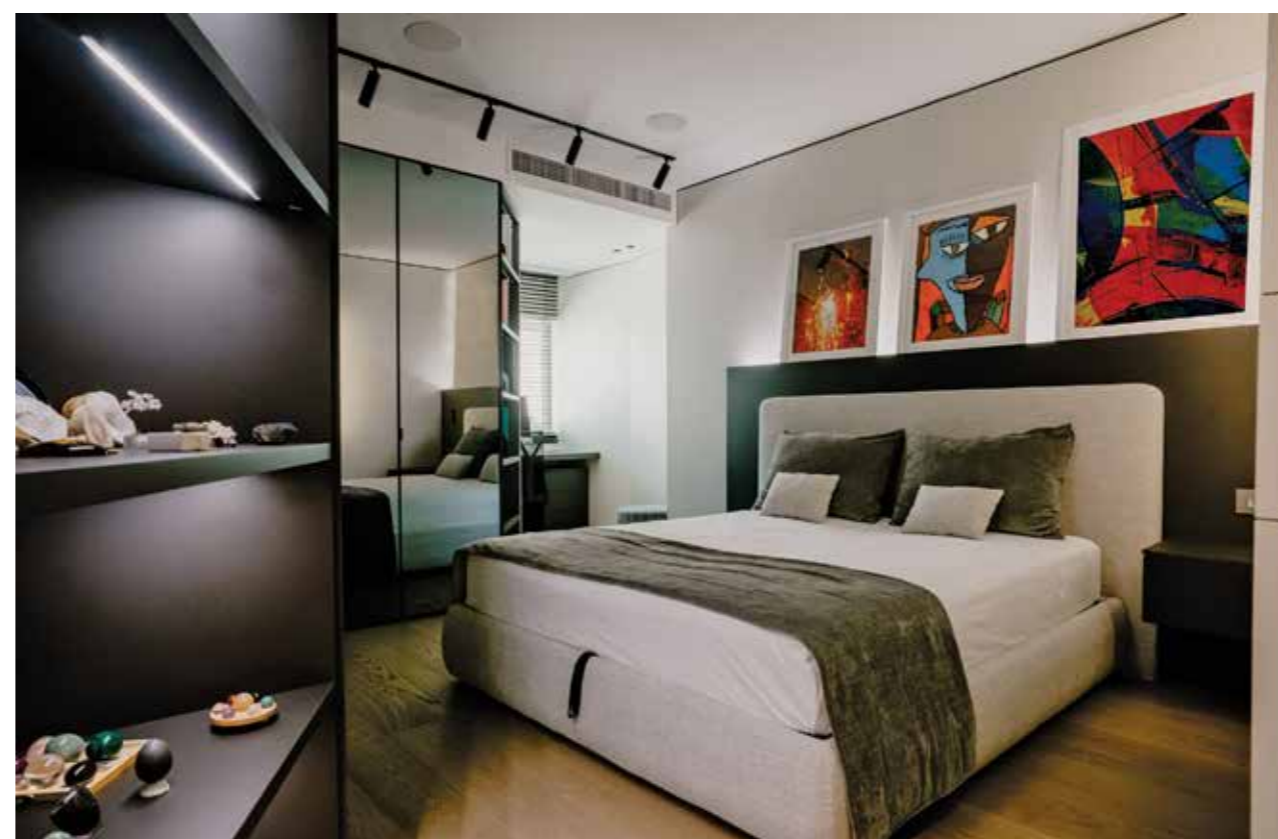


Yet, the genius of this interior is the cutting-edge technology that is seamlessly integrated into its design. Even on the warmest days, the most advanced and silent cooling system ensures a comfortable environment. Fresh air ventilation permeates every corner of the interior, promoting an atmosphere of freshness and vitality. An intelligent audio and lighting system creates the perfect ambiance for any occasion and a top-of-the-line data and security system guarantees peace of mind and privacy for the apartment's discerning owners.

Tucked behind the bar area, a fully fitted high-tech professional kitchen in stainless steel caters to discerning culinary needs. Additional functional spaces include a well-equipped laundry room, a convenient guest WC, housekeeper's quarters, and a spare bedroom with a TV and gaming lounge and its own en-suite bathroom.



The lighting systems and fittings are an integral part of the design. Throughout the apartment, surface-mounted and track-mounted spotlights from ESS and Elektra, who also supplied many of the high-end brand fittings, create discreet lighting effects and draw attention to focal points in the various spaces.



The remaining sleeping quarters are designed for comfort and indulgence. A short corridor leads to night quarters where two more bedrooms are detailed on either side, one of them the master suite which boasts a generously sized walk-in wardrobe. The ensuite bathroom is designed as a sanctuary of relaxation, featuring his and her walk-in sensory showers and a bespoke marble vanity unit, evoking the experience of a 5-star hotel.

Every inch of this apartment has been meticulously curated in collaboration with the finest Italian artisans. Only the highest quality materials have been employed, including real leathers for upholstered wardrobe doors and panels. This careful selection ensures not only a visually stunning space but also one that exudes timeless style, quality and durability. In essence, this Italian contemporary style design sets a new bar for luxury living.